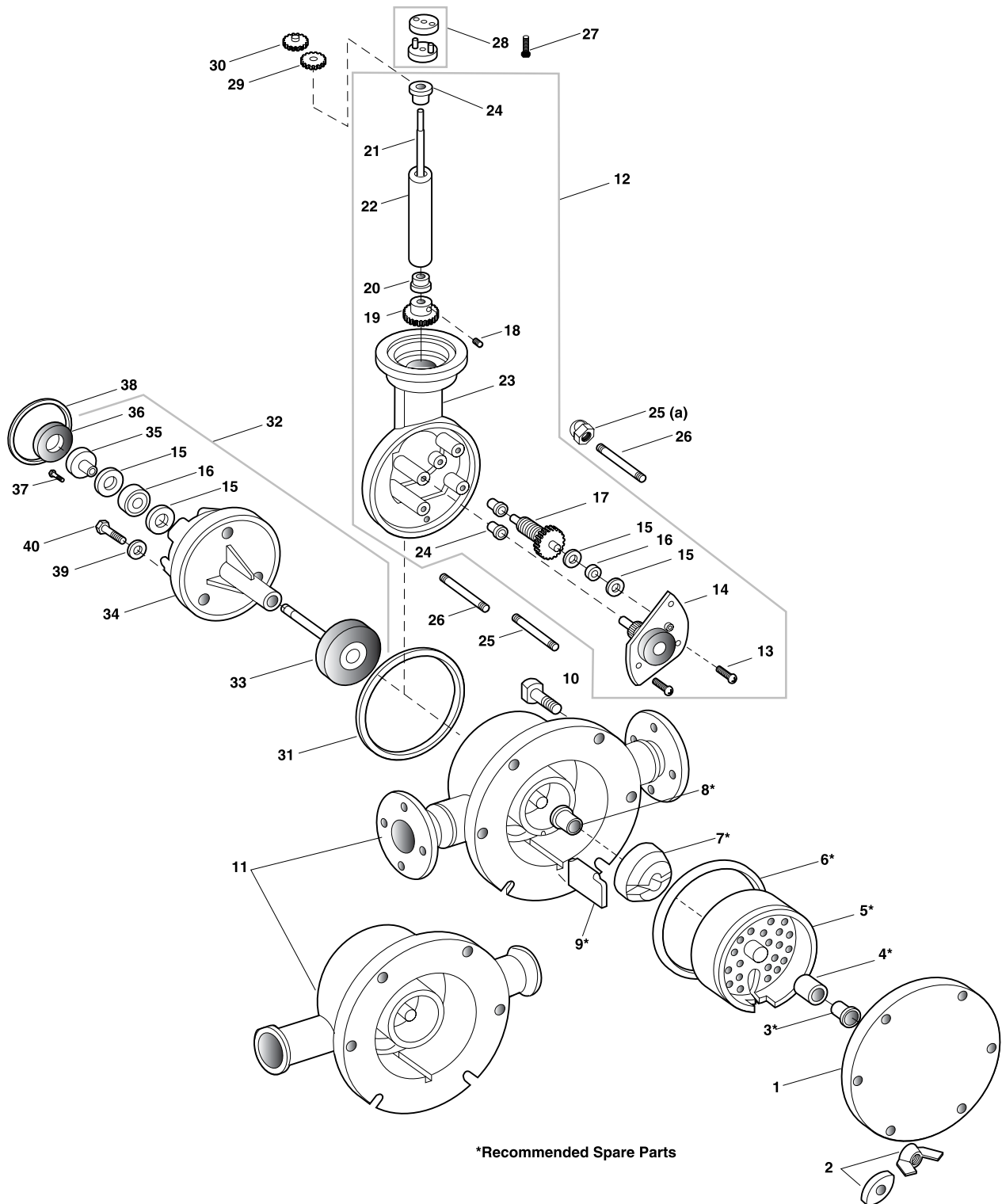


Model 2" OP
Chemical & Sanitary

Industrial Oscillating Piston Meter

Repair
Parts



BadgerMeter, Inc.

IRP-107-05
Part No. 53401-107

ORDER INFORMATION: This repair parts bulletin shows an exploded view of the product with specific reference to those items available for replacement. The item number and part number may change at any time; therefore it is important when placing an order that a complete description of the part, meter size, model and serial number be provided.

ITEM	PART DESCRIPTION	Chemical	Sanitary
1	Housing Cover.....	25935-001	25935-005
2	Wing Nut.....	22086-000	25440-001
*3	Control Roller Bushing (White).....	26880-003	26880-003
*3	Control Roller Bushing (Black) for Abrasive Applications.....	26880-004	-----
*4	Control Roller (Standard).....	22068-003	22068-007
*4	Control Roller (W88 Special) - Item 3 not required w/ W88.....	22068-004	22068-004
*5	Piston, Ryton 40-250°F.....	58807-001	-----
*5	Piston, Ultem 40-250°F.....	63111-001	63111-001
*5	Piston, Kynar 40-150°F.....	32953-000	-----
	Piston, Kynar 150-250°F.....	32953-001	-----
*6	O-Ring, Buna-N (Yellow Dot).....	22650-012	22650-012
*6	O-Ring, Viton-A (White Dot).....	22650-016	22650-016
*6	O-Ring, Ethylene Propylene-EPR (Blue Dot).....	31132-018	-----
*6	O-Ring, Teflon.....	22650-010	22650-010
*7	Magnet Assembly (4 Pole).....	57858-002	57858-001
*8	Magnet Assembly Bushing (White).....	26881-001	26881-001
*8	Magnet Assembly Bushing (Black) for Abrasive Applications.....	26881-002	-----
*9	Partition Plate.....	26416-001	26416-003
10	Housing Cover Bolt.....	25441-000	25441-000
11	Housing, Flanged.....	34922-009	-----
11	Housing, Flanged (300#).....	34922-015	-----
11	Housing, IMDA Thread.....	-----	34922-002
11	Housing, Quick Clamp Ferrule #14 WHQ.....	-----	34922-004
11	Housing, Tri-Clamp Ferrule #14 MPW (Ladish).....	-----	34922-006
11	Housing, Tri-Clamp Ferrule #15 WHI (Cherry Burrell).....	-----	34922-008
12	Right Angle Drive Assembly (Alum) - (40:1).....	25437-022	25437-022
12	Right Angle Drive Assembly (Alum) - (10:1).....	25437-030	25437-030
13	Shoulder Screw.....	24315-000	24315-000
14	Plate & Magnet Assembly (40:1).....	26595-005	26595-005
14	Plate & Magnet Assembly (10:1).....	26595-007	26595-007
15	Ball Race.....	22581-000	22581-000
16	Ball Thrust Bearing.....	24836-000	24836-000
17	Spindle & Gear Assy Worm, (40:1).....	24307-002	24307-002
17	Spindle & Gear Assy Worm, (10:1).....	24307-003	24307-003
18	Set Screw.....	55230-194	55230-194
19	Worm Gear (40:1).....	24311-001	24311-001
19	Worm Gear (10:1).....	24311-000	24311-000
20	Drive Spindle Bushing.....	22881-034	22881-034
21	Drive Spindle.....	24312-002	24312-002
22	Drive Spindle Bushing Retainer.....	32779-000	32779-000
23	Right Angle Drive Housing (Alum. - Gear Train Style).....	32777-000	32777-000
23	Right Angle Drive Housing (Alum. - Elect. Accessory Style).....	58712-001	58712-001
24	Spindle Bushing.....	22881-033	22881-033
25	Stud, 1/4-20 x 1-1/64.....	24191-011	24191-011
25(a)	Acorn Nut (Need Quantity 3).....	22085-000	22085-000
26	Stud, 1/4-20 x 1-29/32 (Need Quantity 2).....	24191-014	24191-014
27	Register Mounting Screw.....	55030-110	55030-110
28	Coupling Assembly for 76 Series Registers.....	56646-003	56646-003
29	Meter Change Gear, (Specify No. of Teeth & Diameter).....	-----	-----
30	Transmitter Change Gear, (Specify #. of Teeth & Diameter).....	-----	-----
31	Housing Gasket (Rear Drive Only).....	33790-000	33790-000
32	Adapter Assembly.....	58157-002	58157-002
33	Magnet & Spindle Assembly.....	57864-002	57864-002
34	Adapter & Bushing Assembly.....	33781-001	33781-001
35	Magnet Carrier.....	34980-001	34980-001
36	Magnet.....	23018-001	23018-001
37	Magnet Retaining Screw.....	55067-060	55067-060
38	Tetraseal.....	22559-027	22559-027
39	Lockwasher.....	55274-011	55274-011
40	Screw.....	55048-279	55048-279

* - Recommended Spare Parts



Please see our website at
www.badgermeter.com
 for specific contacts.

Due to continuous research, product improvements and enhancements, Badger Meter reserves the right to change product or system specifications without notice, except to the extent an outstanding bid obligation exists.



BadgerMeter, Inc.

P.O. Box 245036, Milwaukee, WI 53224-9536

Telephone: (414) 355-0400 / (800) 456-5023

Fax: (414) 355-7499 / (866) 613-9305

www.badgermeter.com