

8.3 Batch Operations

Softkeys can be configured to allow operator control of batch operations from the 720i front panel (see Figure 8-9), Softkeys can be configured using *Revolution III*, serial commands, or the FEATURE menu (see Section 3.2.3 on page 36).

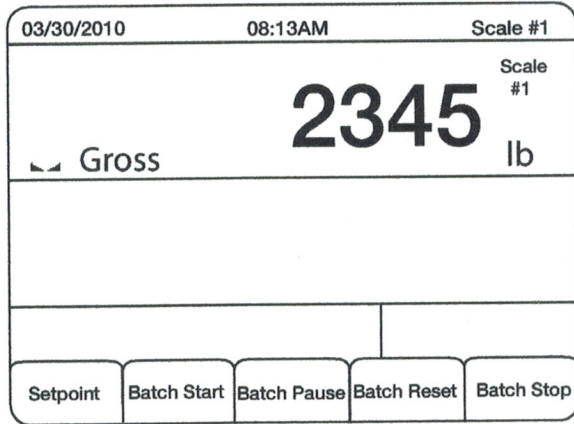


Figure 8-9. Batching Softkeys

- Setpoint** Display or change assigned setpoints.
- Batch Start** Starts batch process.
- Batch Pause** Pauses an active batch and turns off all digital outputs except those associated with concurrent and timer setpoints. Processing is suspended until **Batch Start** is pressed again. Pressing **Batch Start** resumes the batch and re-energizes all digital outputs turned off by the **Batch Pause**.
- Batch Reset** Stops and resets an active batch to the beginning of the process.
- Batch Stop** Stops an active batch and turns off all associated digital outputs.

Warning To prevent personal injury and equipment damage, software-based interrupts must always be supplemented by emergency stop switches and other safety devices necessary for the application.

Batching Switch

The batching switch option, PN 19369, comes as a complete unit in an FRP enclosure, with legend plate, locking stop switch (mushroom button), and a run/start/abort 3-way switch.

Both switches are wired into the indicator's digital I/O terminal strip as shown in Figure 8-11. Each switch uses a separate digital input.

Once cables and switches have been connected to the indicator, use the setup switch to place the indicator in setup mode. Use the DIG I/O menu (see Section 3.2.5 on page 41) to configure digital input and output functions.

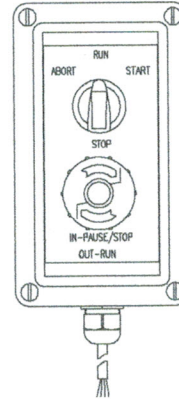


Figure 8-10. Batching Switch

When configuration is complete, exit setup mode. Initialize the batch by turning the 3-way switch to **ABORT**, then unlock the **STOP** button (the **STOP** button must be in the **OUT** position to allow the batch process to run). The batching switch is now ready to use.

Warning If no digital input is assigned to **BATRUN**, batching proceeds as if **BATRUN** were always on: the batch will start when the 3-way switch is turned to **RUN**, but the **STOP** mushroom button will not function.

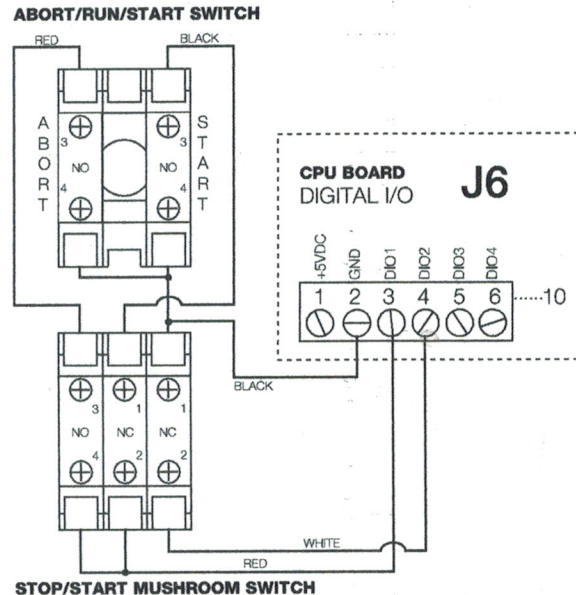


Figure 8-11. Batching Switch Wiring Diagram Example

To begin a batch process, turn the 3-way switch to *START* momentarily. If the *STOP* button is pushed during the batch process, the process halts and the button locks in the *IN* position.

The *START* switch is ignored while the *STOP* button is locked in the *IN* position. The *STOP* button must be turned counterclockwise to unlock it, then released into the *OUT* position to enable the 3-way switch.

To restart an interrupted batch from the step where it left off, do the following:

1. Unlock *STOP* button (*OUT* position)
2. Turn 3-way switch to *START*

To restart an interrupted batch from the first batch step, do the following:

1. Turn 3-way switch to *ABORT*
2. Unlock *STOP* button (*OUT* position)
3. Turn 3-way switch to *START*

NOTE: Use this procedure (or the *BATRESET* serial command) to initialize the new batch routine following any change to the setpoint configuration.